



Red Palm Mite

Red palm mite, also known as *Raoiella indica* Hirst (acari: Tenuipalpidae) is a pest of coconut, areca palm and date palm.

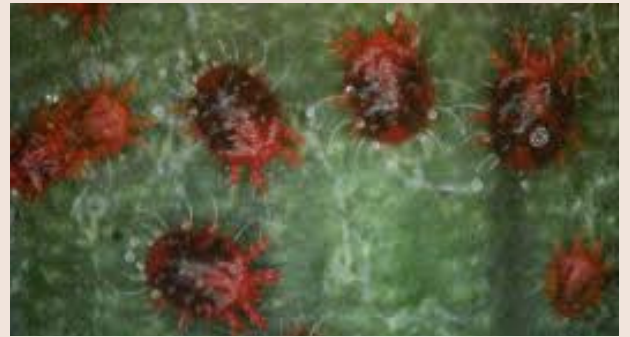


Image Credit : Cardi.org

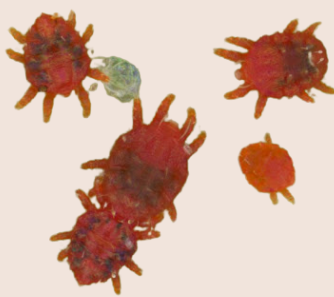


Image Credit : National Research Centre for Banana

The Red palm mite is native to the Eastern Hemisphere - Egypt, India, Iran, Israel, Mauritius, Pakistan, Sri Lanka and Sudan.

Visible to the naked eye.

The mites are usually found on the underside of leaves, often in large groups of hundreds of individuals.

They can be distinguished from spider mites by their red colour, long spatulate setae (hairs) and flattened bodies.



Seed coconuts and handicrafts (hats, bowls, etc) have been found to harbour live mites and viable eggs.

Significant infestations have been observed in the Caribbean on banana plants (*Musa* spp., Musaceae), heliconias (heliconiaceae) and gingers (Ziniberaceae).

For more information on this plant pest!

<https://www.cphdforum.org/>