



CARIBBEAN PLANT HEALTH DIRECTORS

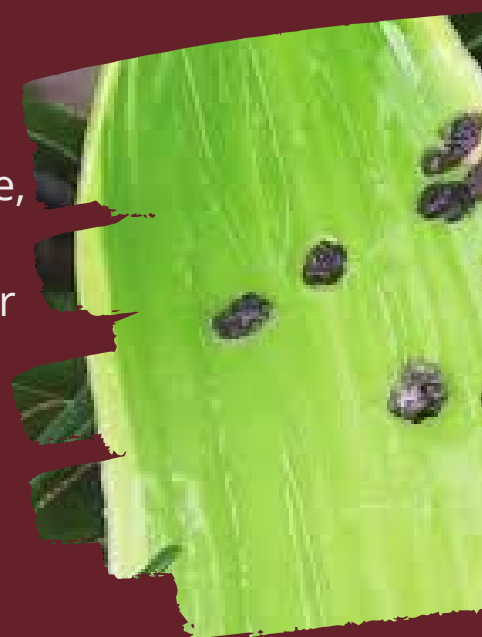
PROTECTING CARIBBEAN AGRICULTURE

CUBAN SLUG

“*The Cuban Slug or *Veronicella cubensis* is originally from parts of Cuba, and the Greater Antilles in the Caribbean.*”

WHAT DOES IT DO?

The Cuban slug has been known to cause severe damage to crop such as bananas, cassava, citrus, coffee, and mangoes that can be found in the Caribbean by leaving irregular holes with smooth edges on the flower or leaf parts of the plant. It also does harm to native plants by transmitting pathogens (nematodes) to humans, cats, and dogs. This slug can also displace native mollusc species.



CONTROL MEASURES

- Removing any forms of debris, litter or trash, must be done in order to not spread infestation
- Carrying the slugs by hand is the simplest but effective way in removing them
- Slugs will not cross copper. An effective barrier for slugs is also salt which helps to safeguard items.
- Molluscicides like carbaryl, methiocarb or Metaldehyde efficacy starts declining over time due to moulding.

WHAT CAN WE DO?

- Do NOT bring into your country any slugs or agricultural produce without the required Plant Quarantine Import Permits/Approval
- When you travel declare all agricultural items.
- Report any infested fruit to your Ministry or Department of Agriculture